

► APAC Region

Inventronics

Inventronics Science and Technology Park, #459 Jianghong Road, Binjiang District, Hangzhou, Zhejiang, China, 310052
Tel: +86-571-56565800
Fax: +86-571-86601139
E-mail: sales@inventronicsglobal.com

Inventronics Shenzhen

2F, Block B, Jianxing Technology Building, No. 3151 Shahe West Road, Nanshan District, Shenzhen, China
Tel: +86-571-56565800
Fax: +86-571-86601139
E-mail: sales@inventronicsglobal.com

Inventronics Indonesia

JB Tower 10th floor
Jl. Kebon Sirih no. 48-50 Gambir, Jakarta, 10110, Indonesia
Tel: +62 21 5095 8096
Email: Evy.i@inventronicsglobal.com

Inventronics Singapore

7 Holland Village Way,
Lobby B, #05-03 / 04 / 05,
Singapore 275748
Tel: +65 9337 5247
E-mail: Colin.Tan@inventronicsglobal.com

► Europe Region

Inventronics Netherlands

Polluxstraat 21, 5047 RA Tilburg, The Netherlands
Tel: +31-857-470-061
Fax: +31-857-470-062
Email: eu-sales@inventronicsglobal.com

Inventronics Italy

Via Castagnole 65/A, 31100 Treviso, Italy
Email: support@inventronicsglobal.com

► Americas Region

Inventronics USA

2825 S Tulsa Ave, Oklahoma City, OK 73108 USA
Tel: +1-405-600-7480
Fax: +1-405-600-9715
E-mail: usa-sales@inventronicsglobal.com

Inventronics Brazil

Tel: +55(11)2680-8310
E-mail: brazilsales@inventronicsglobal.com

► India Region

Inventronics India

Head Office: 4th & 5th Floor, B-Wing, Skyheights, Valipeer Road, Kalyan (west), Pin Code-421301
Factory: Survey No.15, All India Logistics Park, Janval Village, Lonad Village Road, Taluka- Bhiwandi -421 302-Thane
Tel: +91-9845054416
E-mail: in-sales@inventronicsglobal.com

Inventronics Guangzhou

Room 1105-1107, Clifford Corporate Center Building
No. 15, Fuhua Road, Clifford Estate 511496 Panyu,
Guangzhou City, Guangdong Province, China
E-mail: ds_mktg@inventronicsglobal.com

Inventronics East Asia

Suite-615, 501, Teheran-ro, Gangnam-gu,
Seoul, Republic of Korea (06168)(V-flex)
Email: kr-sales@inventronicsglobal.com

Inventronics Malaysia

Level 4, Uptown 7, Jalan SS21/39, Damansara Utama,
47400 Petaling Jaya, Selangor, Malaysia
Tel: +6012 398 1085
E-mail: david.khong@inventronicsglobal.com

Inventronics Thailand

Tel: +6695 545 2893
E-mail: nuntanai@inventronicsglobal.com

Inventronics Vietnam

E-mail: Colin.Tan@inventronicsglobal.com
Tel: +65 9337 5247
E-mail: P.thuhang@inventronicsglobal.com
Tel: +84948286686

Inventronics Germany

Parking 31-33, 85748 Garching, Germany
Email: support@inventronicsglobal.com

Inventronics France

18 Rue Gaston Romazzotti, 67120 Molsheim, France
Tel: +33 3 68 41 88 99
Email: support@inventronicsglobal.com

Inventronics Mexico

Carretera San Martín de las Flores #520
Building 8A Parque Industrial Prologis El Salto
San Pedro Tlaquepaque, Jalisco, Mexico
Tel: +521 3338634039
E-mail: usa-sales@inventronicsglobal.com



Scan this QR code for
more regional sales
contacts.



inventronicsglobal.com

inventronics



Lighting Systems Industrial



Rebranding Our Products from OSRAM to Inventronics

Important Information for Our Customers

Valued Customer, we are pleased to inform you about an important update: following the acquisition of OSRAM Digital Systems by Inventronics in 2023, to ensure continuity of the quality and reliability of the products you trust, **all OSRAM Digital Systems products will transition to the Inventronics brand starting in 2025**, with OSRAM-branded deliveries ending in **March 2026**.




Why this change?

This transition protects the value of the technology, expertise and innovation that power your products and lighting solutions. While the OSRAM name will continue to appear in the marketplace, the trusted knowledge, original teams and proven processes are now part of Inventronics – your dedicated partner in advanced lighting technology.


Inventronics not only ensures you keep the access to the proven performance, innovation, and reliability that have been integral to OSRAM Digital Systems in the past, **but expands its capabilities to provide system solutions in your target application at a global scale.**

What is changing?




New Branding

The OSRAM logo on labels, packaging, documents, and certificates will be replaced by the Inventronics logo




Same Products

Features, names, and in most cases, certification numbers will remain unchanged.



New EANs

Each existing product will receive a new EAN for the Inventronics version, ensuring traceability.



Further Development by Inventronics

All future developments of these products will be handled by Inventronics, leveraging the proven expertise and high quality you have come to expect from OSRAM.

Certifications and Documentation

Consistency Ensured: Since 2023, our products have been listed under “Inventronics” in CB and ENEC certifications. After the transition, rebranded products will retain their certifications, ensuring your existing luminaire certifications remain valid.

Rebranding Without Compromise: Thanks to close coordination with certification bodies, the rebranding will be transparent, with no changes to the technical core functionalities.

About Inventronics

Building a Brighter Future

Inventronics is a premier global producer of cutting-edge lighting solutions such as LED drivers, sensors, control systems, and LED modules. With a strong commitment to quality, reliability, and compliance with international standards, we deliver innovative and efficient solutions to our customers worldwide. The acquisition of OSRAM Digital Systems in Europe and Asia in 2023 has strengthened our portfolio, development, capabilities, and expanded our global reach.



ALL FIELDS OF APPLICATION



Why Choose Us?



A Broad Portfolio Of Dependable Products

You benefit from industry-leading comprehensive portfolio of indoor and outdoor high-quality, energy-efficient products and systems as well technical expertise in all lighting applications from a single source.



A Customer-Focused, Service-Driven Collaborator

We develop for and together with you best fitting components and solutions – from standard to customized.



A Forward-Looking, Global Enterprise

We provide consulting, know-how, products, and services from a single source worldwide. Our customer proximity is our core – with on-site contacts and direct connections, you benefit from our global reach.



An Innovative Technology Leader

Through continuous research and development, we improve and extend our range of highly reliable solutions with advanced technologies that ensure you are one step ahead.



A Trusted Partner for Lighting Companies and beyond

We don't compete with our customers; we work with you to create value and make you more successful.

At Inventronics, we are committed to delivering superior lighting solutions and building lasting partnerships for a brighter future.



Light is robust!

Ensure your warehouses, manufacturing plants, and logistics hubs can operate with adaptable illumination for precision and safety working conditions while minimizing maintenance and energy costs. Benefit from robust, efficient and lasting lighting solutions from Inventronics for your industrial application!

Expertise

Select our globally available and complete set of rugged LED modules, smart drivers, controls and sensors for your lighting solutions, designed for:



Visual comfort, energy efficiency & control



Harsh conditions & durability

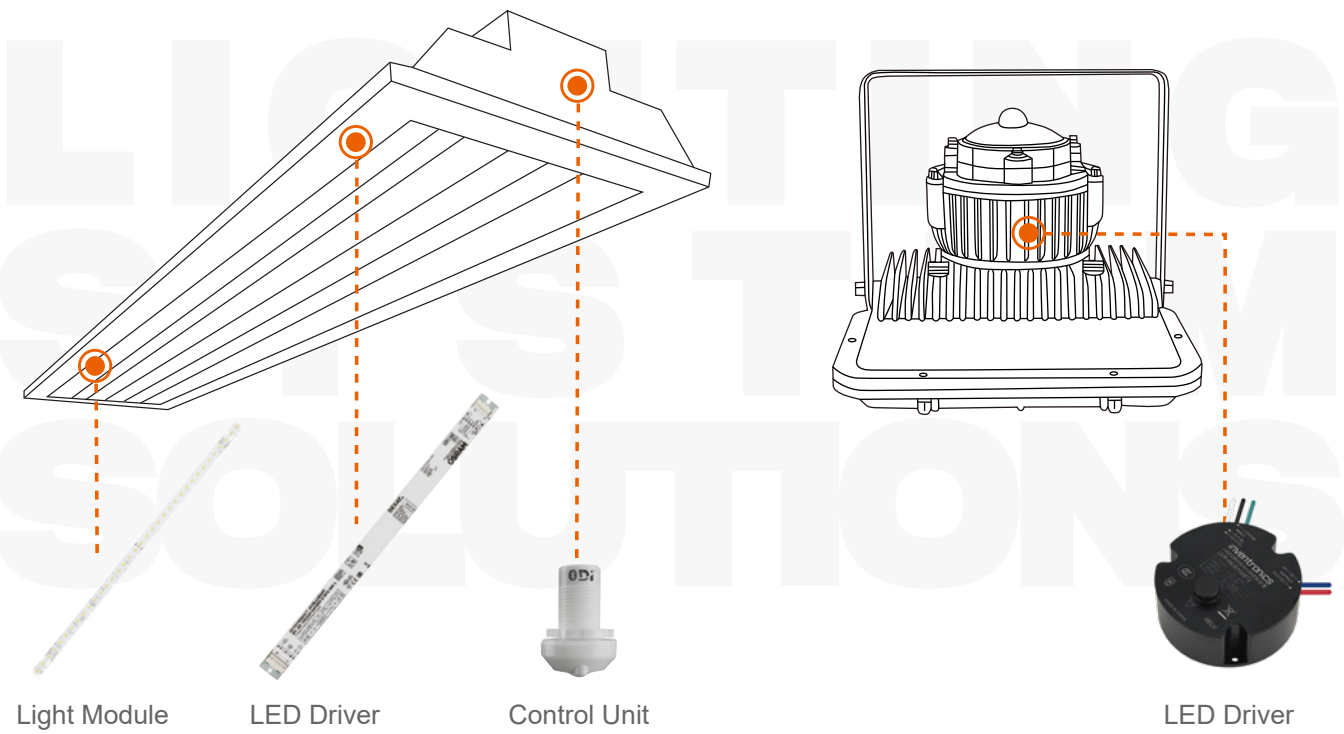


Easy / reduction of maintenance

System Value

- Extended reliability with system approach, built on fully tested, highly reliable components.
- System designed for higher efficiency & durability.
- Tested component interoperability, including LED modules, smart drivers, sensors, and controls.
- Outstanding lighting control, from comfortable switching and dimming, group and scenes control, until daylight harvesting.
- Enhanced monitoring options for energy consumption, voltage peaks or residual lifetime, remotely accessible via cloud.
- Fastest pre-installation programming & user-friendly on-site commissioning.

Lighting System Solutions



Sub-applications



Production Factories

Logistics and Warehouses

Indoor Transportation

Refineries

Steel Production

Mining

Inventronics Cases



◀ The longest metro loop
in South China.
Guangzhou Metro
Line 11, China

Product Portfolio

Lighting Systems - Industrial



01 Controls, Sensors, Programming Tools & Accessories

1.1 DALI	Controllers	DALI PRO 2 IoT	01
		DALI ECO BT RTC	02
	Sensors	DALI-2 SENSOR LS/PD HB LI	03
	Converters / Actuators	DALI-2 REP LI	04
1.2 Bluetooth NLC	Converters / Sensors	Bluetooth NLC D4i Module Indoor	05
		Bluetooth NLC 0-10 Module Indoor	06
		Bluetooth NLC 220-240 LS/PD CI	07
1.3 Software		Tuner4TRONIC	08
		DALI PRO PC Tool	08
		DALI Wizard	08
		BT Config	08
		DALI PRO CONTROL	08
		BT CONTROL	08
		HubSense Commissioning	08
1.4 Programming Tools		PRG-MUL2	09
		PRG-NFC-H	09
		PRG-NFC-D2	09
		DALI magic	09
1.5 Converters		CNV-DALI2	09

02 LED Driver & Accessories

2.1 Connected - Constant Current	OT WI D NFC BL L	10
	OTi DALI N BFC L HE	11
	OTi DX D NFC IND L	12
	OTi DALI D NFC IND L	13
2.2 Simple DIM - Constant Current	IT DIM HF LS/PD KIT	14
	IT DIM CS L	15
	LUM-MTx	16
	EUM-DF	17
2.3 Non Dimmable - Constant Current	EM P7 G2	18
	OT FIT N NFC L HE	19
	EM FIT (N) CS L	20
	EM FIT N CS L CCT	21
	OT FIT D NFC IND L	22

2.4 Accessories	PU-10Kx05KBxA	23
	PU- 20Kx10KTxx	23
	PU- 20KS10KHT	23
	PS-20KS10KHT	23
	SPD G3	24
	PU-20Kx10KWPA	24

03 Light Modules & Accessories

3.1 Rigid - Linear & Area	PrevaLED Linear IND G1	25
	PrevaLED Linear G6	26
	PrevaLED Brick	27





Advantages

- DALI-2 certified
- IoT ready with built-in gateway for remote data access
- Easy browser-based commissioning UI and Professional Software available
- Small form factor: only 6 TE (DIN rail)
- Commissioning via Ethernet/WLAN
- DALI-2 certified for improved multi-vendor interoperability
- Template based onsite commissioning via Smart device
- Building Management System integration via optional KNX interface
- Remote access for changes in the configuration from every location
- LAN Interconnect to connect up-to 8 Controllers into one network
- Rest API for connection of a 3rd party Cloud with the DALI Pro2 IoT Controller
- Automated testing and reporting of emergency lighting installations
- Daylight Simulation via scene recall and/or light sensor regulation

Safety Certifications



Product Name	EAN
DALI PRO 2 IOT	6977078993692

Please note: Until the end of March 2026, deliveries may still include products under the OSRAM brand. Same products, same quality, different logo.

More Technical Data



Advantages

- Compact light control with DALI interface
- Smart phone connection via Bluetooth® to control and configure
- Integrated clock for time based control of brightness and color temperature (HCL)
- Adaptable HCL curve with up to 24 points
- One DALI output channel (Broadcast or Groupcast)
- Up to 32 DALI luminaires connectable
- Supports up to 4 DALI sensors and pushbutton couplers
- Daylight-dependent regulation and presence-dependent control of light
- Pushbutton interface to separately control brightness and color temperature
- Daytime depending change of brightness and color temperature (HCL)
- Suitable for Human Centric Lighting Applications (HCL) Control the light via Smartphone
- Adjustment of all settings via smartphone
- Up to 4 timers with ON-/OFF-Time and weekday configurable
- Simplified startup thanks to predefined operation modes
- Intuitive manual dimming, switching and changing of colour temperature
- Up to 4 groups separatly controllable
- Adjustable Offset for different groups
- Easy Scene creation via App
- Firmware update over-the-air via Bluetooth possible
- Integrated DALI supply
- Control of standard white or Tunable White light acc.
- DALI device type 8 (DT8)
- Selected DALI parameters changeable via APP

Safety Certifications



Product Name	EAN
DALIECO BT RTC CONTROL	6977078993753

Please note: Until the end of March 2026, deliveries may still include products under the OSRAM brand. Same products, same quality, different logo.

More Technical Data





Advantages

- Light and motion sensor for luminaire installation
- Motion detection via passive IR element
- Light sensor operating range: 5 ~ 2000 lx (measured at sensor)
- Detection height up to 17 m
- Function indicator LED
- Intended for installation into a standard ½" knockout
- Design freedom due to compact size
- Protection Class IP65 (In installed condition)
- Easy to integrate in luminaire
- DALI-2 certified
- DALI Bus powered (No mains connection necessary)
- Multiple sensors connectable to the same DALI line
- Shutter included to optimize sensor detection
- Integreatable in light- and building management systems supporting DALI-2 sensors

Product Name	EAN
DALI-2 SENSOR LS/PD HB LI	6977078993791

Please note: Until the end of March 2026, deliveries may still include products under the OSRAM brand. Same products, same quality, different logo.

More Technical Data



Advantages

- Expansion of DALI systems by 64 DALI control gears each time
- Extends the DALI line by 300 m
- Maximum power consumption in stand-by mode: 1 W
- Four versatile operating modes: Basic, Group, Extend, Touch DIM
- Basic mode: DALI-2 certified DALI converter for grouping up to 64 standard DALI driver
- Group mode: Groups up to 64 DALI drivers and up to 5 Inventronics DALI-2 sensors
- Group mode: Supports standard DALI drivers and DALI-DT8 drivers (TW / RGB (W))
- Touch DIM mode: Simple switching and dimming of up to 64 drivers.
- Powerful power supply: 130 mA DALI bus power supply
- Can be addressed via DALI

Safety Certifications



Product Name	EAN
DALI-2 REP LI	6937186116437

Please note: Until the end of March 2026, deliveries may still include products under the OSRAM brand. Same products, same quality, different logo.

More Technical Data





Bluetooth NLC D4i Module Indoor

Advantages

- With/without Daylight and Occupancy Sensor D4i Module
- Bluetooth NLC enabled by Silvair
- Control of D4i drivers or DALI drivers with additional DALI bus power supply
- Intended for installation into a standard ½" knockout
- Works with Hubsense®
- Standard communication protocol released by Bluetooth SIG
- Design freedom due to compact size
- Easy to integrate in luminaire
- Minimize internal wiring in combination with D4i drivers
- Secured product communication granted by ioXT and PSA Certificates

Safety Certifications



Product Name	EAN
B NLC D HB LI	6977078990363
B NLC D LI R	6977078990387
B NLC D MB LI	6977078990448
B NLC D LB LI	6977078990462
B NLC D OF LI BK	6977078993425
B NLC D OF LI S	6977078997041
B NLC D OF LI	6977078997553

Please note: Until the end of March 2026, deliveries may still include products under the OSRAM brand. Same products, same quality, different logo.

More Technical Data



Bluetooth NLC 0-10 Module Indoor

Advantages

- Design freedom due to compact size
- Easy to integrate in luminaire
- Minimize internal wiring in combination with 0-10V LED drivers
- With/without Daylight and Occupancy Sensor
- Bluetooth NLC
- Control of 0-10V LED drivers
- Works with Inventronics Hubsense

Safety Certifications



Product Name	EAN
B NLC A OF LI	6937186115959
B NLC A HB LI	6937186115973
B NLC A LI R	6937186115997

Please note: Until the end of March 2026, deliveries may still include products under the OSRAM brand. Same products, same quality, different logo.

More Technical Data





Advantages

- Presence detection via passive IR element
- Detection height up to 4 meter
- Bluetooth NLC enabled by Silvair
- Suitable for up to 16 DALI-2 LED drivers (Part - 207) in broadcast mode
- Ambient light dependent control and presence detection
- Shutter included to optimize sensor detection
- Simplified mounting for flush device boxes
- Large motion detection range

Safety Certifications



Product Name	EAN
B NLC 220-240 LS/PD CI	6977078990400

Please note: Until the end of March 2026, deliveries may still include products under the OSRAM brand. Same products, same quality, different logo.

More Technical Data



SOFTWARE

Software

Overview

Inventronics offers a comprehensive range of professional software solutions to support and configure its components.



T4T



Apps



Tuner4TRONIC

A software suite for OEMs that enables the configuration of all programmable OPTOTRONIC, ICUTRONIC, QUICKTRONIC, and POWERTRONIC LED drivers during the luminaire manufacturing process.



DALI PRO PC TOOL

Software for configuring DALI installations in combination with the DALI PROFESSIONAL control unit DALI PRO C-4 RTC or DALI PRO 2 IoT. DALI PRO 2 IoT is an innovative lighting management control technology for the IoT era.



DALI Wizard

A GUI tool for setting up, analyzing, and diagnosing DALI ECG installations, used in combination with the DALI Wizard control device.



BT Config

An app that offers standalone component detection and automatic light calibration, eliminating the need for manual commissioning and adjustments of daylight-dependent controls.



DALI PRO CONTROL

With just a simple tap, you can easily control complex lighting scenarios: turn lights on or off, adjust brightness, change colors, or modify color temperature.



BT CONTROL

Allows the control of DALI-enabled luminaires via a smartphone, including light level and color temperature adjustments, as well as the storage of individual lighting scenes.



HubSense Commissioning

The “HubSense Com” app is a tool to carry out configurations and to test light settings for the installer and the system integrator in order to intuitively commission on site Bluetooth Mesh components (QBM), which are qualified according to the standard.

PROGRAMMING TOOLS

Programming Tools



- PRG-MUL2**
Features
- Programmer for All Inventronics DALI and 0-10V Programmable Drivers
 - Offline Programming Capability
 - Automatic Programming Mode



- PRG-NFC-H**
Features
- For Use with Inventronics NFC Enabled Drivers
 - Zhaga Book 24 Compliant
 - USB Powered
 - IP30
 - Connects to Inventronics Multi-Programmer Software



- PRG-NFC-D2**
Features
- For Use with Inventronics NFC Enabled Drivers
 - Zhaga Book 24 Compliant
 - USB Powered
 - IP42
 - Connects to Inventronics Multi-Programmer Software



- DALI magic**
Features
- USB DALI converter for Tuner4TRONIC and DALI wizard software for Windows PC
 - Pushbutton to test DALI dimming without need of connection to computer
 - Powered by USB or by included universal power supply
 - Integrated automatic DALI supply of up to 64 devices (up to 4 if powered by USB)

CONVERTERS

Converters

DALI-2
CNV-DALI2
DALI-2 Stadium/Stage Lighting
Management Solutions



- Features**
- Convert DALI-2 Signal to 0/1-10V Dimming Signal
 - Comply with DALI-2 Protocol
 - Powered By Auxiliary Power with 3-Wire Connection to Driver



Advantages

- Qualified Bluetooth mesh enabled by Silvair
- Supply voltage: 220 ~ 240 V
- Line frequency: 0 Hz | 50 Hz | 60 Hz
- Line voltage: 198 ~ 264 V
- Lifetime: up to 100,000 h
- Type of protection: IP20
- Non-isolated drivers
- Versatile QBM window driver up to 100 W and 750 mA
- Fully programmable via software (NFC)
- Very high efficiency
- High-quality dimming of 1 ~ 100 % (amplitude and/or PWM selectable by software)
- Higher quality of light thanks to < 1% output ripple current
- Fulfils safety requirement due to overload, overtemperature
- Hot Plug protection

Safety Certifications



EAN	Product Name	Nominal output power (W)	Nominal output current (mA)	Nominal output voltage (Vdc)	Efficiency (max.)	Dimensions (L×W×H)(mm)
6937186112057	OT Wi 35/220-240/400 D NFC BL L	4 ~ 38	75 ~ 400	54 ~ 240	92%	280 x 30 x 21
6937186112071	OT Wi 75/220-240/550 D NFC BL L	6.5 ~ 75	125 ~ 550	54 ~ 240	93%	280 x 30 x 21
6937186112095	OT Wi 100/220-240/750 D NFC BL L	5.4 ~ 100	100 ~ 750	54 ~ 260	94%	280 x 30 x 21

Please note: Until the end of March 2026, deliveries may still include products under the OSRAM brand. Same products, same quality, different logo.

More Technical Data





Advantages

- Input voltage: 220 ~ 240Vac
- Wide Output current range
- Fully programmable DALI/NFC
- Low THD <5% @ full load
- Wide ambient temp range
- Support DALI parts -251, -252, -253
- Wide output voltage range
- CLO – Constant Lumen Output
- Very high efficiency up to 96%
- 100'000 h lifetime at max tc
- 5 years guarantee
- Suitable for Emergency Lighting
- Improved Efficiency and Power factor at partial loads
- One version to mach multiple power applications with improved product performance and drivers per Circuit Braker, reducing the need of various SKUs. The 75W version can be used to replace 75/60/35/25W applications with equivalent or better performance. Same for 150W version to match 150/100/90W ones.
- Wide operating range adjustable via DALI or NFC
- CLO integrated for maximizing energy savings
- Small, slim white metal housing
- Programmable Hybrid dimming 1 ~ 100%

EAN	Product Name	Output Power (W)	Adjustable Current Range (mA)	Output Voltage (Vdc)	Eff. @220Vac	Dimensions (L×W×H)(mm)
6937186150226	OTi DALI 75/220-240/550 N NFC L HE	3 ~ 75	35 ~ 550	54 ~ 240	96%	280 x 30 x 16
6937186150240	OTi DALI 150/220-240/1A0 N NFC L HE	6 ~ 150	100 ~ 1000	54 ~ 300	96%	360 x 30 x 21

Please note: Until the end of March 2026, deliveries may still include products under the OSRAM brand. Same products, same quality, different logo.

About OTi DALI N NFC L HE

OPTOTRONIC Linear DALI, Non-isolated, High Efficiency Power Supply is the ideal choice for linear and area fixtures for office - industrial - shop lighting requiring very high conversion efficiency, extended operative window with excellent Harmonic Distortion and Power Factor in all working conditions, dimmable via DALI interface including parts 251,252,253 for monitoring Luminaire, Energy and Diagnostic data.

Dimming Functions

DALI-2

Safety Certifications



Advantages

- Line frequency: 0 Hz | 50 Hz | 60 Hz
- Versatile scope of application due to output power range of up to 150 W
- Monitoring of luminaire operating parameters
- Supply voltage: 220 ~ 240 V
- Available with output current range: up to 850 mA
- Constant Lumen Output (CLO)
- Integrated customizable thermal management (Driver Guard)
- Non-isolated drivers
- Versatile non-isolated DEXAL LED driver up to 150 W due to flexible output characteristic
- Integrated DEXAL Bus power supply for sensors and wire-less radios
- Simplified luminaire design for wireless lighting control system and sensors
- Locking and unlocking of luminaire/driver data
- Advanced luminaire/driver data (power, energy, operating hours...) for analytics
- Prepared for DiiA Specification Parts -250, -251, -252 and -253
- Fully programmable via T4T software (NFC, DALI Interface)
- Lifetime: up to 100,000 h (temperature at Tc = 75 °C)
- High light quality: 1 ~ 100% amplitude dimming
- Wide operating temperature range: -40 ~ +65 °C
- High surge protection: up to 4 kV (L-N) / 4 kV (L/N-PE)
- Integrated inrush current limiter
- Very high efficiency (up to 96%)

Safety Certifications



EAN	Product Name	Nominal output power (W)	Nominal output current (mA)	Nominal output voltage (Vdc)	Efficiency (max.)	Dimensions (L×W×H)(mm)
6937186111890	OTi DX 100/220-240/700 D NFC IND L	23 ~ 100	200 ~ 700	64 ~ 300	93%	425 x 30 x 21
6937186111913	OTi DX 150/220-240/850 D NFC IND L	43 ~ 150	250 ~ 850	64 ~ 300	95%	425 x 30 x 21

Please note: Until the end of March 2026, deliveries may still include products under the OSRAM brand. Same products, same quality, different logo.

More Technical Data





Advantages

- Line frequency: 0 Hz | 50 Hz | 60 Hz
 - Versatile scope of application thanks to an output power range of up to 300 W
 - Supply voltage: 220 ~ 240 V
 - Available with output current range: up to 1,000 mA
 - Constant Lumen Output (CLO)
 - Integrated customizable thermal management (Driver Guard)
 - Non-isolated drivers
 - DALI-2 certified (Part -251, -252, -253)
- Fully programmable via T4T software (NFC, DALI Interface)
 - Lifetime: up to 100,000 h (temperature at Tc = 75 °C, max. 10 % failure rate)
 - High light quality: 1 ~ 100% amplitude dimming and 1% output ripple current
 - Wide operating temperature range: -40 ~ +55 °C
 - High surge protection: up to 4 kV (L-N) / 4 kV (L/N-PE)
 - Very high efficiency (up to 96%)
 - Fulfill safety requirement due to overload, overtemperature
 - Hot Plug protection
 - Touch DIM® application: easy to control via pushbutton
 - Suitable for emergency Installations (acc. to EN 60598-2-22 and IEC 61347-2-13, appendix J) thanks to DC detection (0 Hz, pulsating DC), on/off switchable

Safety Certifications



EAN	Product Name	Nominal output power (W)	Nominal output current (mA)	Nominal output voltage (Vdc)	Efficiency (max.)	Dimensions (L×W×H)(mm)
6977770436589	OTi DALI 75/220-240/550 D NFC IND L	8.0 ~ 75	125 ~ 550	64 ~ 300	94%	360 x 30 x 21
6977770436503	OTi DALI 100/220-240/700 D NFC IND L	28 ~ 100	200 ~ 700	64 ~ 300	94%	360 x 30 x 21
6977770436527	OTi DALI 150/220-240/1A0 D NFC IND L	43 ~ 150	250 ~ 1000	64 ~ 300	95%	425 x 30 x 21
6977770436626	OTi DALI 150/220-240/700 D NFC IND L	43 ~ 150	200 ~ 700	64 ~ 260	94%	360 x 30 x 21
6977770436602	OTi DALI 300/220-240/1A6 D NFC IND L	80 ~ 300	250 ~ 1550	60 ~ 300	96%	360 x 45 x 28

Please note: Until the end of March 2026, deliveries may still include products under the OSRAM brand. Same products, same quality, different logo.

More Technical Data



Advantages

- Flexible with 1 driver offers 4 output currents
 - Low THD 10% @ full load
 - Input voltage: 220 ~ 240 VAC
 - Ambient temp range ta: -25 to +50 °C
 - Low LF-ripple 5%
 - 5 years guarantee
 - Non-isolated drivers
 - HF LI Sensor (Light- and motion detection via radar)
 - StepDIM function for different light levels
 - Different operating modes for daylight- or motion-dependent switching selectable
 - Motion detection range adjustable
 - Detection height up to 6 meter
- KIT including driver, HF Sensor and cabling
 - Non isolated system for energy saving applications
 - High quality light with very low ripple
 - Very high efficiency
 - Enable slim fixture design with flat 21 mm height metal housing
 - Long lasting and high reliability

Safety Certifications



EAN	Product Name	Nominal output power (W)	Nominal output current (mA)	Nominal output voltage (Vdc)	Efficiency (max.)	Dimensions (L×W×H)(mm)
6937186111777	IT DIM 40/HF LS/PD KIT	8 ~ 42	200 ~ 350	40 ~ 120	86.5%	210 x 30 x 21
6937186111791	IT DIM 60/HF LS/PD KIT	18 ~ 61.3	201 ~ 350	90 ~ 175	92%	280 x 30 x 21
6937186111814	IT DIM 75/HF LS/PD KIT	31.5 ~ 75.6	202 ~ 350	90 ~ 216	93%	280 x 30 x 21

Please note: Until the end of March 2026, deliveries may still include products under the OSRAM brand. Same products, same quality, different logo.

More Technical Data





Advantages

- Class P / 2 family in 40 / 60 and 75W
- 5-100% dimming incl. dim to off
- Dipswitches for current setting (4)
- low flicker index below 5%
- wide ta range -25 ~ +50°C
- 100'000 hours lifetime @ Tc65
- UL and CB approved
- 5 years guarantee

Dimming Functions

0-10V / PWM dimming

EAN	Product Name	Nominal output power (W)	Nominal output current (mA)	Nominal output voltage (Vdc)	Efficiency (max.)	Dimensions (L×W×H)(mm)
6977078994958	IT DIM 40/120-277/800 CS L	40	500 ~ 800	27 ~ 54	85%	210 x 30.21
6977078994972	IT DIM 60/120-277/1A2 CS L	60	900 ~ 1200	27 ~ 54	86%	280 x 30.21
6977078994996	IT DIM 75/120-277/1A6 CS L	75	1300 ~ 1600	27 ~ 54	87%	280 x 30.21

Please note: Until the end of March 2026, deliveries may still include products under the OSRAM brand. Same products, same quality, different logo.

Safety Certifications



Advantages

- Power Level: 20W, 25W, 30W, 40W, 85W
- Input voltage 120 ~ 277V
- Surge: 2 / 4 kV
- IP Rating: IP20
- Dimming: 1% dimming capability with Dim to Off | 0-10V /
- PWM dimming
- 1% dimming capability with Dim to Off
- Programming via Inventronics PC programmer / Tuner4TRONIC
- Very low ripple for high lighting quality
- 12V Aux included
- Long lasting and high reliability
- UL Class 2

Safety Certifications



EAN	Product Name	Nominal output power (W)	Nominal output current (mA)	Nominal output voltage (Vdc)	Efficiency (max.)	Dimensions (L×W×H)(mm)
6937186100146	LUM-020S100MTF	20	100 ~ 1050	10 ~ 55	85%	280 x 29 x 26
6937186100184	LUM-025S130MT	25	100 ~ 1300	10 ~ 56	82%	126 x 60.1 x 24
6937186100160	LUM-025S130MTG	25	100 ~ 1300	10 ~ 56	82%	126 x 60.1 x 24
6937186100085	LUM-030S100MTF	30	100 ~ 1050	10 ~ 55	85%	280 x 29 x 26
6937186100207	LUM-040S150MT	40	300 ~ 1500	10 ~ 56	84%	126 x 60.1 x 24
6937186100221	LUM-040S150MTG	40	300 ~ 1500	10 ~ 56	84%	126 x 60.1 x 24
6937186100108	LUM-050S140MTF	50	400 ~ 1400	10 ~ 55	86%	280 x 29 x 26
6937186100122	LUM-085S240MTF	85	700 ~ 2400	10 ~ 55	91%	424 x 30 x 26

Please note: Until the end of March 2026, deliveries may still include products under the OSRAM brand. Same products, same quality, different logo.

More Technical Data





Advantages

- Input Voltage Range: 90 ~ 305Vac
- Full Power at Wide Output Current Range (Constant Power)
- Adjustable Output Current (AOC) with Programmability
- Output Lumen Compensation
- End-of-Life Indicator
- Input Surge Protection: DM 6kV, CM 10kV
- All-Around Protection: OVP, SCP, OTP
- IP66 and UL Dry/Damp Location
- TYPE HL, for Use in a Class I, Division 2 Hazardous (Classified) Location
- 5 Years Warranty

Dimming Functions

- Isolated 1-8V/10V PWM/3-Timer-Modes Dimmable
- Adjustable Dimming Curve
- Override Dimming

Safety Certifications



Output Power (W)	Product Name	Adjustable Current Range (mA)	Output Voltage Range (Vdc)	Eff.@ 220Vac	Lifetime (hours)	Dimensions (L×W×H)(mm)
180	EUM-180S125DF	105 ~ 1250	67 ~ 190	93%	109,000 Tc=70°C	240.5(171) × 60 × 37.6

About EUM-DF

The EUM-180S125DF series is a 180W, constant-current, programmable IP66 LED driver that operates from 90-305Vac input. It is drop-in compatible to the popular 180W F-Can form factor from Signify Advance and Acuity EldoLED. The aluminum extruded case and fully potted design provides superior thermal performance and extended lifetime. Perfect for Outdoor Street and Area Lighting, as well as Indoor Industrial High Bay Lighting, and a great alternative upgrade to the popular 180W F-Can drivers.



Advantages

- High efficiency up to 96%
- Input Voltage Range: 108 ~ 305Vac
- Fix output of 700mA
- Long life time
- Input Surge Protection: DM 6kV, CM 6kV
- Suitable for Luminaires with Protection Class I
- IP67

Dimming Functions

Not relevant

Safety Certifications



Output Power (W)	Product Name	Adjustable Current Range(mA)	Output Voltage Range (Vdc)	Eff.@ 220Vac	Lifetime (hours)	Dimensions (L×W×H)(mm)
100	EM 100/120-277/700 P7 G2	700	100 ~ 143	93.5%	50,000 Tc=75°C	143.5 x 56 x 33
150	EM 150/120-277/700 P7 G2	700	150 ~ 215	94.5%	50,000 Tc=75°C	143.5 x 56 x 33
200	EM 200/120-277/700 P7 G2	700	200 ~ 285	95.5%	50,000 Tc=75°C	150.5 x 56 x 33
240	EM 250/120-277/700 P7 G2	700	240 ~ 343	96.0%	50,000 Tc=75°C	150.5 x 56 x 33



Advantages

- Very high Efficiency up to 97%
- Current adjustable via NFC
- CLO integrated for maximizing energy savings
- Small, slim white metal housing
- Suitable for emergency lighting units
- Wide Output current range
- Low THD ~ 4.7% @ full load
- Input voltage: 220 ~ 240VAC
- Ambient temp range ta: -25 ~ +55°C
- Wide output voltage range
- CLO – Constant Lumen Output
- Fixed output (no dimming)
- 5 years guarantee

Dimming Functions

Not relevant

EAN	Product Name	Nominal output power (W)	Nominal output current (mA)	Nominal output voltage (Vdc)	Efficiency (max.)	Dimensions (L×W×H)(mm)
6937186128447	OT FIT 75/220-240/550 N NFC L HE	4 ~ 75	35 ~ 550	54 ~ 240	95.1%	280 x 30 x 16
6937186128461	OT FIT 150/220-240/1A0 N NFC L HE	28 ~ 150	200 ~ 1000	64 ~ 300	97%	280 x 30 x 21

Please note: Until the end of March 2026, deliveries may still include products under the OSRAM brand. Same products, same quality, different logo.

More Technical Data



Advantages

- Dip switch for 4 output currents per model
- High light quality thanks to low ripple
- PF>0.95, Low THD<10% @ full load
- Excellent price/quality/watt ratio
- Suitable for Class I luminaires

Dimming Functions

Not relevant

Safety Certifications



Product Name	Output Power (W)	Adjustable Current Range (mA)	Min Dimming Output Current (mA)	Output Voltage (Vdc)	Eff. @220Vac	Dimensions (L×W×H)(mm)
EM FIT 18/220-240/0A35/N CS L	18	200/250/300/350	not relevant	24 ~ 54	87%	168 x 30 x 21
EM FIT 40/220-240/0A35/N CS L	40	200/250/300/350	not relevant	40 ~ 120	90%	168 x 30 x 21
EM FIT 60/220-240/0A35/N CS L	60	200/250/300/350	not relevant	90 ~ 175	90%	168 x 30 x 21
EM FIT 75/220-240/0A55/N CS L	75	350/400/500/550	not relevant	90 ~ 216	91%	210 x 30 x 21
EM FIT 18/220-240/0A35 CS L	18	200/250/300/350	not relevant	27 ~ 51	87%	168 x 30 x 21
EM FIT 40/220-240/0A8 CS L	40	500/600/700/800	not relevant	27 ~ 51	90%	168 x 30 x 21
EM FIT 60/220-240/1A2 CS L	60	900/1050/1100/1200	not relevant	27 ~ 51	90%	210 x 30 x 21
EM FIT 75/220-240/1A6 CS L	75	1300/1400/1500/1600	not relevant	27 ~ 51	91%	280 x 30 x 21



Advantages

- Dip switch for 4 output currents per model
- High light quality thanks to low ripple
- PF>0.95, Low THD<10% @ full load
- Excellent price/quality/watt ratio
- CCT selection
- Suitable for Class I luminaires

Dimming Functions

Not relevant

Safety Certifications



Product Name	Output Power (W)	Adjustable Current Range (mA)	Min Dimming Output Current (mA)	Output Voltage (Vdc)	Eff. @220Vac	Dimensions (L×W×H)(mm)
EM FIT 18/220-240/0A35/N CS L CCT	18	200/250/300/350	not relevant	24 ~ 54	87%	168 x 30 x 21
EM FIT 40/220-240/0A35/N CS L CCT	40	200/250/300/350	not relevant	40 ~ 120	90%	168 x 30 x 21
EM FIT 60/220-240/0A35/N CS L CCT	60	200/250/300/350	not relevant	90 ~ 175	90%	168 x 30 x 21
EM FIT 75/220-240/0A55/N CS L CCT	75	350/400/500/550	not relevant	90 ~ 216	91%	210 x 30 x 21



Advantages

- Line frequency: 0 Hz | 50 Hz | 60 Hz
- Versatile scope of application due to output power range of up to 300 W
- Supply voltage: 220 ~ 240 V
- Available with output current range: up to 1,600 mA
- Constant Lumen Output (CLO)
- Non-isolated drivers
- Flexible and future-proof current setting via NFC and LT2
- Lifetime: up to 100,000 h (temperature at Tc = 75 °C, max. 10 % failure rate)
- Wide operating temperature range: -40 ~ +65 °C
- High quality of light thanks to 1% output ripple current
- High surge protection: up to 4 kV (L-N) / 4 kV (L/N-PE)
- Very high efficiency (up to 96%)
- Integrated inrush current limiter
- Fulfill safety requirement due to overload, overtemperature

Safety Certifications



EAN	Product Name	Nominal output power (W)	Nominal output current (mA)	Nominal output voltage (Vdc)	Efficiency (max.)	Dimensions (L×W×H)(mm)
6937186103703	OT FIT 75/220-240/550 D NFC IND L	8.0 ~ 75	125 ~ 550	64 ~ 300	94%	360 x 30 x 21
6977770438309	OT FIT 100/220-240/700 D NFC IND L	28 ~ 100	200 ~ 700	64 ~ 300	96%	360 x 30 x 21
6977770438323	OT FIT 150/220-240/1A0 D NFC IND L	43 ~ 150	250 ~ 1000	64 ~ 300	96%	360 x 30 x 21
6937186103727	OT FIT 300/220-240/1A6 D NFC IND L	40 ~ 300	250 ~ 1550	60 ~ 300	96%	360 x 46 x 28

Please note: Until the end of March 2026, deliveries may still include products under the OSRAM brand. Same products, same quality, different logo.

More Technical Data



PU-10Kx05KBxA



■ Features

- 90-305Vac Working Input Voltage
- Uoc=10kV & In=5kA
- Certified for both EN 61643-11 - T2 & T3
- Protection Mode for TN, TT and IT-Systems
- Available for Series & Parallel Installation
- Available for Class I & Class II luminaires
- Double Thermally Protected
- End-of-life LED Indicator
- High Temperature, 85°C Maximum Surface Temp
- Input Over Voltage Protection at 440Vac with 48 Hours
- IP66 / IP67

PU-20Kx10KTxx



■ Features

- Compatible with Inventronics LED Drivers
- 90-305Vac Working Input Voltage
- 15 kA Maximum, 10 kA Nominal (15 strikes) Surge Current Rating Using Industry Standard 8/20µs Wave
- UL1449 Type 4, EN 61643-11 – Surge Protective Devices T2 & T3
- IEEE C62.41.2 Location Category C High
- High Temperature, 85°C Maximum Ambient
- Flameproof Plastic Enclosure
- IP66

PU-20KS10KHT



■ Features

- Compatible with Inventronics LED Drivers
- 90-305Vac Working Input Voltage
- DM, CM Surge Protection Mode
- Maximum Discharge Current (Imax) 20kA, 8/20µs
- Nominal Discharge Current (In) 10kA, 8/20µs
- UL1449 Type 5 Recognized Component
- IEEE C62.41.2 Location Category C High Exposure
- High Temperature, 85°C Maximum Surface Temp Rating

PS-20KS10KHT



■ Features

- Compatible with Inventronics LED Drivers
- 249-528Vac Working Input Voltage
- DM, CM Surge Protection Mode
- Maximum Discharge Current (Imax) 20kA, 8/20µs
- Nominal Discharge Current (In) 10kA, 8/20µs
- UL1449 Type 5 Recognized Component
- IEEE C62.41.2 Location Category C High Exposure
- High Temperature, 85°C Maximum Surface Temp Rating

SPD G3



■ Features

- Mains Voltage to 320Vac
- Suitable for Luminaires of Protection Class I/II
- Fully LED Driver Protection by Up <2kV
- High Surge Protection of Up to 20 kV / 10 kA (L-N); Comply with IEC 61643-11 - T3
- Maximum Surge Protection of Up to 20 kA; Comply with IEC 61643-11 - T2
- TÜV Approved Acc. to IEC 61643-11 – T2 & T3
- IP20 (SPD G3)
- IP65 (SPD P5 G3)



Advantages

- Module efficacy: up to 193 lm/W
- Available with luminous flux: 1,400 lm on 280 mm
- Available with luminous flux: 2,800 lm on 560 mm
- Available with color temperature: 4,000 K, 5,000 K or 6,500 K
- High initial color consistency: ≤ 3 SDCM
- Average lifetime (L80 B50): 100,000 h (temperature at $T_c = 60^\circ\text{C}$)
- CE marked, ENEC certified
- LED module for robust application
- Very long lifetime
- Reliable system between IND LED module and Optotronic
- OT IND driver
- Adjustable luminous flux, efficacy and lifetime

Safety Certifications



More Technical Data



Advantages

- Module efficacy: up to 173 lm/W
- Available with luminous flux: 245 lm on 62 mm, 275 lm on 70 mm
- Available with luminous flux: 1,100 lm or 2,000 lm on 280 mm
- Available with luminous flux: 2,200 lm or 4,000 lm on 560 mm
- Color rendering index: 90
- High initial color consistency: ≤ 3 SDCM
- Average lifetime (L80 B50): 70,000 h (temperature at $T_c = 50^\circ\text{C}$)
- Slim luminaire design by small and flexible form factor
- High homogeneity thanks to small LED pitch
- High voltage (HV) optimized for non-isolated, low voltage (LV) optimized for SELV operation
- Adjustable luminous flux, efficacy and lifetime
- Direct the light where it's needed while using PrevaLED
- Linear Optics

Safety Certifications



More Technical Data



NOTES

Notes



Advantages

- High-performance module for outdoor and street lighting
- Dimensions aligned with Zhaga book 15
- Compatible with third party optics, e.g. from LEDIL
- High module efficiency for demanding lighting solutions
- Thermal monitoring with NTC on LED Module
- Several color temperature: 2,200 K, 2,700 K, 3,000 K, 4,000 K, 5,700 K and 6,500 K and with CRI > 70 and CRI > 80
- Initial color consistency: ≤ 5 SDCM
- PrevaLED Brick HP: focused on combination of high robustness and high efficiency
- PrevaLED Brick HP HE: focused on combination of high efficiency and high lumen output

About PrevaLED Brick

PrevaLED Brick is a LED Module series for Outdoor lighting application based on the Zhaga Standard

Different configurations based on LED quantities, CCT, CRI, LED Technology are available.

Complying with Zhaga Book 15 (IP20 versions) and Book 19 (IP66 versions with dedicated optics)

Furthermore, PrevaLED Brick is also available with 2 different LED Strings for dual channels systems and integration into Tunable White applications

Safety Certifications



Product Name	Single Color (K)	Nominal Voltage (Vdc)	Nominal Current (A)	On-Mode Power (W)	Luminous Efficacy (lm/W)	Luminous Flux (lm)	Number of LEDs Per Module
PL-BRICK HP 1000 740 2X2	4000	12	0,53	6	186	1110	4
PL-BRICK HP 1900 740 2X4	4000	23	0,53	12	186	2220	8
PL-BRICK HP 2850 740 2X6	4000	34	0,53	18	186	3330	12
PL-BRICK HP 1900 740 2X8	4000	45	0,53	24	186	4450	16
PL-BRICK HP 2850 740 2X6 IP G2	4000	34	0,53	18	186	3330	12
PL-BRICK HP 2850 740 2X4 HE	4000	23	0,53	12	204	2410	8
PL-BRICK HP 3800 740 2X6 HE	4000	34	0,53	18	204	3620	12
PL-BRICK HP 3800 740 2X8 HE	4000	45	0,53	24	204	4830	16
PL-BRICK HP 7500 3x8 HE IP	4000	70	0,53	37	208	7590	24
Product Name	Dual Color (K)	Nominal Voltage (Vdc)	Nominal Current (A)	On-Mode Power (W)	Luminous Efficacy (lm/W)	Luminous Flux (lm)	Number of LEDs Per Module
PL-BRICK HP 3000 722-740 2X4 HE 2CH	2200	23	0,35	8	157	1250	2x4
	4000	23	0,35	8	195	1550	
PL-BRICK HP 6000 722-740 2X8 HE 2CH	2200	45	0,35	16	157	2510	2x8
	4000	45	0,35	16	195	3100	