

QUICKTRONIC® QT-FQ

● 1 ~ 220V
 ● 2 240V
 ○ 3
 ○ 4
 ○ 5
 ○ 6
 ○ 7

**QUICKTRONIC®
QT-FQ 2x80**

lamp	U _N [V]	I _N [A]	f _N [Hz]	λ	t _{st} [°C]
2xHO80W	220-240	0,76	50-60	0,99	-20...+50
2xDL80W	220-240	0,76	50-60	0,99	-20...+50
2xDL55W	220-240	0,59	50-60	0,99	-20...+50

EOL T-2
 Temp.-Test
 t_c = 75°C
 Range of application: AC/DC 180V to 264V
 Can be used for luminaires protection class I and II
 Starting time < 1sec
 Connect PE to case or PIN 4
 OSRAM GmbH
 Berlinler Allee 65
 86153 Augsburg
 Germany
 www.osram.com
A2 BAT
OSRAM
 Made in Bulgaria

picture only for reference, valid print on product 1)

● 1 ~ 220V
 ● 2 240V
 ○ 3
 ○ 4
 ○ 5
 ○ 6
 ○ 7

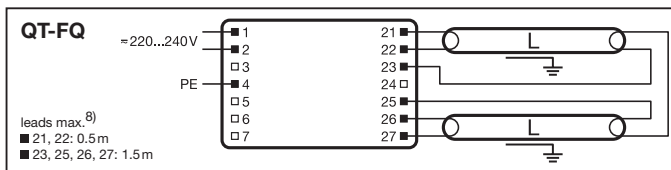
**QUICKTRONIC®
QT-FQ 2x80**

lamp	U _N [V]	I _N [A]	f _N [Hz]	λ	t _{st} [°C]
2xHO80W	220-240	0,76	50-60	0,99	-20...+50
2xDL80W	220-240	0,76	50-60	0,99	-20...+50
2xDL55W	220-240	0,59	50-60	0,99	-20...+50

EOL T-2
 Temp.-Test
 t_c = 75°C
 Range of application: AC/DC 180V to 264V
 Can be used for luminaires protection class I and II
 Starting time < 1sec
 Connect PE to case or PIN 4
 OSRAM GmbH
 Berlinler Allee 65
 86153 Augsburg
 Germany
 www.osram.com
A2 BAT
OSRAM
 Made in Bulgaria

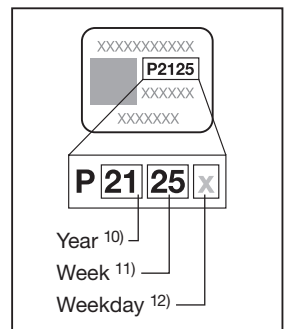
4) wire preparation push in s: 0,5 - 1,0 mm
 5) IDC-contact s: 0,5 mm f: 0,75 mm
 6) Range of application: AC/DC 180V to 264V
 Can be used for luminaires protection class I and II
 Starting time < 1sec
 Connect PE to case or PIN 4
 OSRAM GmbH
 Berlinler Allee 65
 86153 Augsburg
 Germany
 www.osram.com
A2 BAT
OSRAM
 Made in Bulgaria

8) Leads max. 0,5m
 9) U-OUT = 430V L-leads max. 1,5m Not connected
 21
 22
 23
 24
 25
 26
 27



10A (B/C)	5 x
16A (B/C)	9 x

	≤ 39 A
T _H	230 μs



OSRAM

