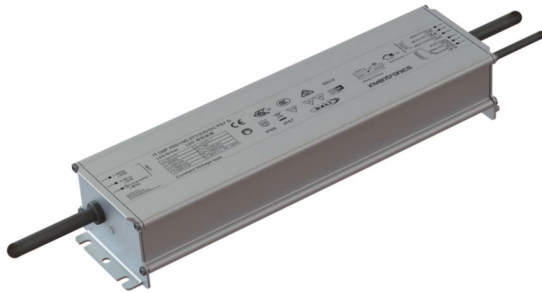


## IT D0P 250/100-277/24V/2C P67 G (NEW)

Constant voltage ECG for LED modules



### Product family features

- 1 to 2 DALI addressable channels
- Programmable for DALI DT6 or DT8 operation
- Programmable for 0-10V, PWM dimming modes
- Dimming range: 0/1...100 %
- Inrush current limiter circuit

### Product family benefits

- Universal input 100...277 Vac
- 24,2 V output + 1,5 V adjustable
- IP66 and IP67 protection
- High modular PWM output frequency of 20...6 kHz

## Areas of application

- Public squares and architecture lighting
- Dimmable signage
- Suitable for indoor and outdoor SELV installations
- Suitable for Class I and II luminaires

## Technical data

### Electrical data

Nominal input voltage	220...240 V
Mains frequency	50/60 Hz
Input voltage AC	90...305 V
Nominal input current at 230 V	1.18 A
Total harmonic distortion	< 10 %
Power factor $\lambda$	> 0.95
Efficiency in full-load	92 %
Device power loss	21.7 W
Inrush current	7.6 A <sup>1)</sup>
Max. ECG no. on circuit breaker 10 A (B)	7
Max. ECG no. on circuit breaker 16 A (B)	11
Surge capability (L/N-Ground)	6 kV
Surge capability (L-N)	4 kV
Nominal output voltage	24.2 V <sup>2)</sup>
U-OUT (working voltage)	28 V
Output ripple current (100 Hz)	< 3 %
Output PSTLM	<1
Output SVM	<0.4
Nominal output power	0...250 W
Maximum output power	200 W
Galvanic isolation	SELV
Galvanic isolation DALI/mains	Double
Networked standby power	<0.5 W

1) @ 230 V, Full load, cold start

2) +1.5 V adjustable via magnet

## Dimensions & weight

<b>Length</b>	263.0 mm
<b>Width</b>	70.0 mm
<b>Height</b>	47.0 mm
<b>Mounting hole spacing, length</b>	255 mm
<b>Mounting hole spacing, width</b>	40.0 mm
<b>Cable cross-section, input side</b>	1.0 mm <sup>2</sup>
<b>Cable cross-section, output side</b>	2.0 mm <sup>2</sup>
<b>Wire preparation length, input side</b>	10 mm
<b>Wire preparation length, output side</b>	10 mm
<b>Product weight</b>	1330.00 g

## Colors & materials

<b>Casing material</b>	Aluminium
<b>Product color</b>	Grey

## Temperatures & operating conditions

<b>Ambient temperature range</b>	-30...+50 °C
<b>Maximum temperature at tc test point</b>	90 °C
<b>Temperature range at storage</b>	-25...85 °C
<b>Permitted rel. humidity during operation</b>	5...85 %

## Lifespan

<b>ECG lifetime</b>	50000 h <sup>1)</sup>
---------------------	-----------------------

1) @ tc=tc max -5°C and 10 % failure rate, 14 h ON and 10 h stand-by per day

## Capabilities

<b>Programming interface</b>	DALI
<b>Dimmable</b>	Yes
<b>Dimming interface</b>	1...10 V / DALI-2 / Pulse Width Modulation
<b>Dimming range</b>	1...100 %
<b>Dimming method</b>	1 - 10V / DALI - 2 / Pulse Width Modulation
<b>Max. cable length to lamp/LED module</b>	<3.0 m
<b>Suitable for fixtures with prot. class</b>	I / II
<b>Suitable for emergency lighting</b>	Yes
<b>Type of connection, input side</b>	Cables
<b>Type of connection, output side</b>	Cables
<b>Number of channels</b>	2
<b>Overheating protection</b>	Yes
<b>Overload protection</b>	Yes
<b>Short-circuit protection</b>	Yes
<b>Intended for no-load operation</b>	No
<b>No-load proof</b>	Yes

## Programming

Tuner4TRONIC	Yes
--------------	-----

## Programmable features

DALI Settings	Yes
---------------	-----

## Certificates & standards

Approval marks – approval	CE / ENEC / CCC / MM / RCM / PSE
Standards	IEC/EN 61347-2-13 / IEC/EN 55015 / IEC/EN 61547 / IEC/EN 61347-1 / IEC/EN 62384 / IEC/TR 62778 / IEC/EN 60598-1 / EN
Type of protection	IP66/IP67

## Environmental information

Information according Art. 33 of EU Regulation (EC) 1907/2006 (REACH)	
Date of Declaration	29-04-2026
Primary Article Identifier	6937186176806
Declaration No. in SCIP database	In work
SCIP_ID	

---

## Download Data

File		
User instruction	PDF	▶ G15132215_UI_DOP_24V_family 040326

## Logistical Data

Product code	Product description	Packaging unit (Pieces/Unit)	Dimensions (length x width x height)	Volume	Gross weight
6937186176806 INVENTRONICS	IT D0P 250/100- 277/24V/2C P67 G	Shipping carton box 9 Pieces	540 x 355 x 215 mm	41.22 dm <sup>3</sup>	1520.33 g

The mentioned product code describes the smallest quantity unit which can be ordered. One shipping unit can contain one or more single products. When placing an order, for the quantity please enter single or multiples of a shipping unit