

LF2000S -G5-827-05 L1

LINEARlight FLEX Uniformity IP00 | – LED modules for professional and industrial applications



Product family features

- 24 V LED strips flexible and cuttable, 50 mm cut unit
- Available variants: 800 lm/m 1200 lm/m 2000 lm/m / CRI Ra: 95+ 90+ and 80+
- Up to 60,000 h L90/B10 with SDT technology, tested acc. to IEC 62717 on real LED strips
- Stable light flux over length: active constant current regulators (ICs), PWM safe
- Embedded automatic quick protection against accidental miswiring up to 25 V
- Fully PWM dimmable from zero up to 2.5 kHz, audible noise free, suitable for quite places
- Designed, engineered and manufactured and tested in Italy (ISO9001, ISO 17025, ACCREDIA, VDE)

Product family benefits

- Color uniformity better than 2 SDCM on the entire LED strip and between strips
- Light stability over time typically 1 SDCM, tested acc. to IEC 62717 @ 6,000 h
- LED lifetime acc.to IES LM-80 and IES TM-21 standards
- Reliable photometric parameters according to IES LM-79, EN13032-4 and CIE S 025
- Accurate description of the color rendition of the light source acc. to IES TM-30-15
- Excellent robustness: single reel manufacturing technology (no solder joints on strip)
- Vibration-resistant for stationary installations acc. to IEC60068-2-6 and IEC60068-2-64
- Flicker and stroboscopic effect-free acc. to IEC TR 61547-1 and IEC TR 63158
- Tested by accredited Product Qualification Lab. ISO9001, ISO 17025, ACCREDIA, VDE
- Easy mounting on many smooth surfaces thanks to self-adhesive tape at the back



Technical data

Electrical data

Nominal voltage	24.0 V
Type of current	DC
Nominal wattage per foot	4.8 W
Rated wattage	80.00 W
Input voltage range	23...25 V
Accidental reverse input voltage protection up to	25 V

Photometrical data

Color rendering index Ra	80
Luminous flux per ft US	609.6 lm
Luminous efficacy	125 lm/W
Light color (designation)	2700 K
Color Temperature	2700

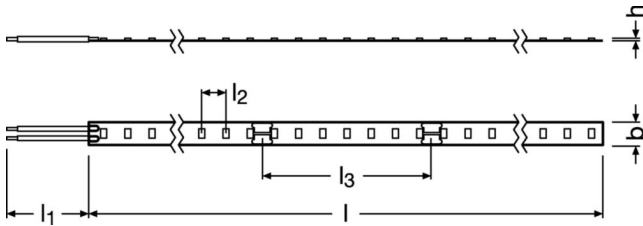
Light technical data

LED pitch [PIM] US	0.28 in
Beam angle	120 °
Starting time	0 s
Warm-up time (60 %)	0 s

LED module information

Number of LEDs per foot	42
Number of LEDs per smallest unit	7

Dimensions & weight



Length US	196.9 in
Length – smallest unit US	1.97 in
Width US	0.31 in
Height US	0.06 in
Product weight US	2.19 oz
Cable cross-section, input side US	0.00077500155 in ²

Temperatures & operating conditions

Temperature range in operation at Tc point US	-22...+185 °F ¹⁾
Ambient temperature range US	-22...+122 °F
Temperature range at storage US	-40...+185 °F

1) Exceeding the maximum ratings will reduce expected life time or destroy the LED strip.

Lifespan

Rated lamp life time	60000 h
Number of switching cycles	>15000

Additional product data

ID of contained light source	LS_TRV_285950
------------------------------	---------------

Capabilities

Lowest bending radius US	0.79 in
--------------------------	---------

Certificates & standards

Standards	CE / UL / ENEC / EAC
Type of protection	IP00
Energy efficiency class of the contained light source	E

Logistical data

Commodity code	85395100000
-----------------------	-------------

Environmental information

Information according Art. 33 of EU Regulation (EC) 1907/2006 (REACH)	
Date of Declaration	29-05-2026
Primary Article Identifier	4062172170970 6937186128942
Declaration No. in SCIP database	In work
SCIP_STATUS	In work
SCIP_ID	

Equipment / Accessories

- Flexessories: a complete set of aluminum channels with diffusers and lenses
- Connectors: quick-and-easy toolless installation with SLIMCONNECTsystem G2
- Drivers and dimmers: wide selection of OPTOTRONIC 24 V DALI, DMX and BLE
- Check for more detailed information the specification sheets in the download section

Ecodesign regulation information:

- This product is considered to be a "containing product" in the sense of Regulations (EU) 2019/2020 and (EU) 2019/2015.
- Tolerances of the reported values, are according to LED Modules Performance standard IEC/EN 62717.
- In general, the replacement of the contained light sources without permanent damage to the product with the use of common available tools is possible in the final application when they can be dismantled from the installation environment and substituted for the necessary number of light sources restoring its full electrical/mechanical/thermal/optical functionality by means of a professional installer. In the contrary, and limited to the LINEARlight Flex Diffuse, LINEARlight Rigid Finesse, GINO LED Flex Diffuse and LUMINENT Milky product families, the contained light source is an integrated part of the containing product and its removal can only be done by causing a permanent damage to the containing product due to its tight mechanical, electrical, optical, thermal interaction and/or environmental protection with or from the containing product. Therefore, a replacement of the light source with the use of common available tools is not justified.
- Dismantling of light sources from containing products at end of life: Containing products with light sources which are scalable in length can be cut to the length of the contained light source and if applicable mechanically detached from protective and/or optical covers. Containing products shall be separated from building material and/or from other additional mounting accessories by means of a professional installer. Separate control gear and light sources must be disposed of at certified disposal companies in accordance with Directive 2012/19/EU (WEEE) in the EU and with Waste Electrical and Electronic Equipment (WEEE) Regulations 2013 in the UK. For this purpose, collection points for recycling centres and take-back systems (CRSO) are available from retailers or private disposal companies, which accept separate control gear and light sources free of charge. In this way, raw materials are conserved and materials are recycled.

Download Data

File		
IES data	Compressed	▶ LF2000S-G5-827-05 L1 IES data 231020
Product Datasheet	PDF	▶ LINEARlight FLEX UNIFORMITY_Specification Sheet_IP00 - 24V
Product Datasheet	PDF	▶ LINEARlight FLEX UNIFORMITY_Specification Sheet IP00_24V [imperial units] 140526
Eulumdat	Compressed	▶ LF2000S-G5-827-05 L1 EULUM 231020
User instruction	PDF	▶ LINEARlight FLEX Uniformity

Logistical Data

Product code	Product description	Packaging unit (Pieces/Unit)	Dimensions (length x width x height)	Volume	Gross weight
6937186128942 INVENTRONICS	LF2000S -G5-827-05 L1	Shipping carton box 8 Pieces	9.49 x 7.68 x 8.07 in	0.34 ft ³	6.30 oz

The mentioned product code describes the smallest quantity unit which can be ordered. One shipping unit can contain one or more single products. When placing an order, for the quantity please enter single or multiples of a shipping unit

Disclaimer

Subject to change without notice. Errors and omission excepted. Always make sure to use the most recent release.

Accessories Optional

Product description	Accessory name	Accessory code
LF2000S -G5-827-05 L1	FX-QMS-G1 -TU15H6W3-300	▶ 6937186126702
LF2000S -G5-827-05 L1	FX-QMS-G2 -TU16H12-300	▶ 6937186126740
LF2000S -G5-827-05 L1	FX-QMW-G2 -TU26H25W10-200	▶ 6937186126801
LF2000S -G5-827-05 L1	FX-QMW-G2 -TU26H25-200 WH KIT5	▶ 6937186126825
LF2000S -G5-827-05 L1	FX-QMW-G2 -TU26H10-200 WS	▶ 6937186126849
LF2000S -G5-827-05 L1	FX-QMS-G2 -TU15H6-300	▶ 6937186130860
LF2000S -G5-827-05 L1	Corner surface wide profile 46x27 mm	▶ 6937186131706
LF2000S -G5-827-05 L1	CONN-FLEX -2P-050 KIT 10PCS	▶ 6937186141088
LF2000S -G5-827-05 L1	CONN-FLEX -2P-200 KIT 10PCS	▶ 6937186141101
LF2000S -G5-827-05 L1	LTS-SLIMTRACK -2000 KIT 5 PCS	▶ 6937186141200
LF2000S -G5-827-05 L1	CORNER-FLEX -4P-003 KIT 10PCS	▶ 6937186141262
LF2000S -G5-827-05 L1	CORNER-FLEX -4P-015 KIT 10PCS	▶ 6937186141286
LF2000S -G5-827-05 L1	FX-QMS-G1 -TU16H12W3-300	▶ 6937186146229
LF2000S -G5-827-05 L1	FX-QMW-G1 -TK30D46H27-300	▶ 6937186148407
LF2000S -G5-827-05 L1	FX-QMS-G1 -TU16H12LS-300	▶ 6937186148421
LF2000S -G5-827-05 L1	Pendant wide profile 56x70 mm	▶ 6977078997805
LF2000S -G5-827-05 L1	Pendant wide profile 56x70 mm	▶ 6977078997836
LF2000S -G5-827-05 L1	Pendant wide profile 56x70 mm	▶ 6977078997867
LF2000S -G5-827-05 L1	Pendant wide profile 56x70 mm	▶ 6977078997898
LF2000S -G5-827-05 L1	Pendant wide profile 56x70 mm	▶ 6977078997928
LF2000S -G5-827-05 L1	Pendant wide profile 56x70 mm	▶ 6977078997959
LF2000S -G5-827-05 L1	null	▶ 6977078998017
LF2000S -G5-827-05 L1	null	▶ 6977078998048
LF2000S -G5-827-05 L1	null	▶ 6977078998079
LF2000S -G5-827-05 L1	null	▶ 6977078998109
LF2000S -G5-827-05 L1	null	▶ 6977078998130
LF2000S -G5-827-05 L1	null	▶ 6977078998161
LF2000S -G5-827-05 L1	LF -WIRE-30 FLEX SC	▶ 4008321875587
LF2000S -G5-827-05 L1	LF -WIRE-150 FLEX SC	▶ 4008321875563
LF2000S -G5-827-05 L1	LF -WIRE-150 FLEX SC	▶ 6937186138323
LF2000S -G5-827-05 L1	CONN-FLEX -2P-050 KIT 10PCS	▶ 4062172179591
LF2000S -G5-827-05 L1	CONN-FLEX -2P-050 KIT 10PCS	▶ 6937186141088